



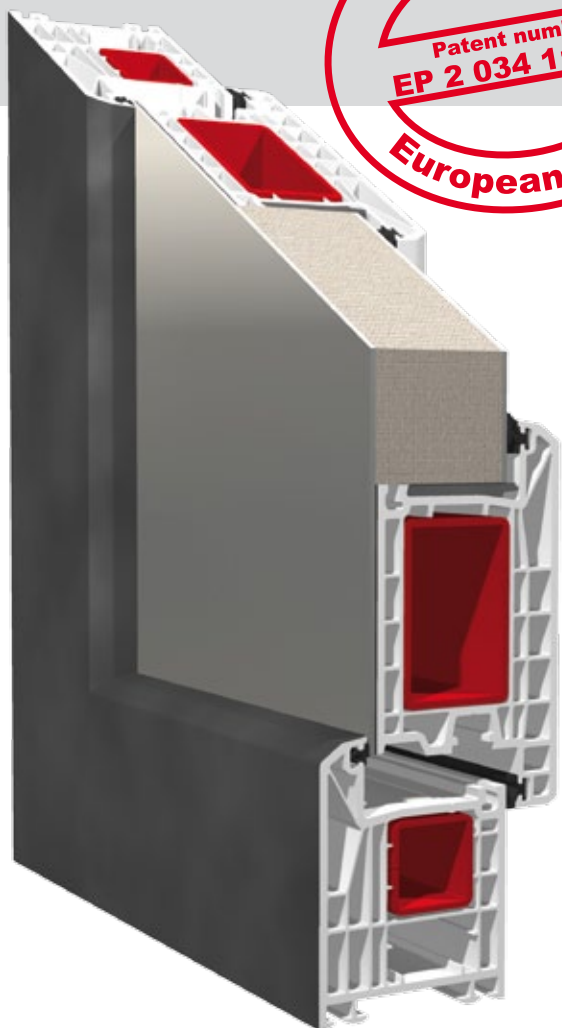
Inner sash door panelling



KBE[®]
WINDOW SYSTEMS

Design & Stability

in a new Dimension



Inner sash door panelling

- Excellent thermal insulation through panelling thicknesses up to 50 mm
- Rapid processing time
- High strength through continuous adhesion
- No glazing bead require
- No blocking required
- Sash cannot drop
- Elegant and modern look
- Push handle can be fastened to the sash or to the panelling

A modern house requires an original front door solution. The new patented inner sash door panelling from KBE meets these requirements without any doubts. Apart from the unusual design, due to no longer having a sash in the outer aspect, the solution is characterised by its simple, rapid and cost-effective handling during assembly.

The door panelling can be obtained pre-assembled via our exclusive partner Rodenberg for the installation depths 70mm and 88mm.

